

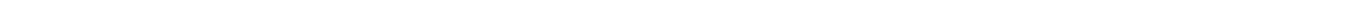
# Georgia Psychological Society© Newsletter

Volume 1  
Number 2  
April  
2006



## Contents

We begin our first year! .....	page 2
College Teaching Tips.....	page 3
GPS member interests.....	page 3
SNAPSHOT interview on Industrial- Organizational Psychology.....	page 4
 In the laboratory: Forensic Psychology.....	page 5
Society member news.....	page 6
2006 Conference Schedule.....	page 8
2006 Poster Session.....	page 8
2006 Presentations, Symposia, Workshops.....	page 9
2006 At a glance conference schedule.....	page 14





## WE BEGIN!

The Georgia Psychological Society<sup>©</sup> celebrates the beginning of our first year with an ambitious schedule. We start with our meeting in April with activities and presentations to promote Psychological Science in Georgia. We have talks and workshops planned for students, practitioners, and faculty. For students, we have a two hour mock-GRE testing experience to give students an appreciation of the different test domains and feedback on their mock-performance. In addition, there are roundtable talks and presentations on different options for graduate school, and discussion on the different specialty areas both within Psychology, Social Work, and closely related allied fields. For professionals and faculty we have workshops on Disaster Safety procedures, pedagogical concerns of how college students construct meaning within their majors, and diagnostic issues in cases of clinical malingering. We are proud to offer 5.5 Social Work contact hours in our first conference.

We look forward to meeting our colleagues at our conference as we make professional ties across campuses throughout Georgia. Our workshops and roundtables are meant not only to enhance a sharing of ideas, but to foster collaborations. This is especially true for our Special Interest Groups, in Psychology of Aging, Teaching of Psychology, and Early Intervention. As part of the conference, we plan to have a discussion about new interest groups in Counseling and Clinical Psychology, Experimental Psychology, Ethnicity and Race, and Psychology of Social Work. We have needs in Georgia, and our interest groups are a part of getting together interested people to address research, programs and solutions for these needs.

Coinciding with our conference is the Special Edition of the Southeastern Journal of Psychology which contains our conference proceedings. We are now reviewing and editing manuscripts for the regular edition of the Journal, and we look forward to more submissions in the future. Our first regular issue of the Journal will be ready in July, with our second regular issue in December.



## FIRST ANNUAL MEETING

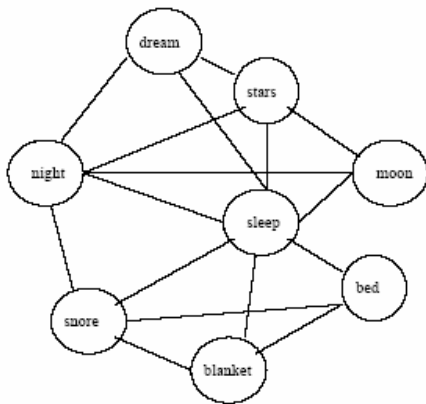
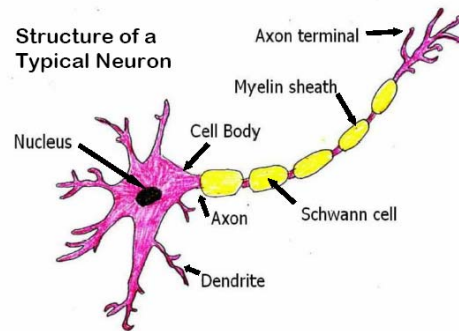
Our first annual meeting will be held on the campus of Valdosta State University on April 7-8th 2006. We hope that every member will have an opportunity to attend and join us at our first annual gathering. Please enjoy our professional fellowship, make connections, and enjoy our first annual meeting!

---

## College Teaching Tips: A Neural Network Demonstration

To demonstrate the many connections of a neuron to other neurons and activation across a network of neural connections, Dr. Blaine Browne uses strings and volunteer students to mimic a neural network.

In order to do this activity, students are first spread out in the class. Different lengths of string are used to mimic neural path lengths. Each student is given one end of a string to hold. Then another student holds the other end of the string. That student is given another string to hold that is then given to a different student. This is repeated until many pathways are made and all students are holding at least two pieces of string that go in different directions. Each string represents an axon communicating to another neuron. Dr. Browne then asks one or more students to move their strings up and down to mimic cell communication. Students on the receiving end of the strings, then move their strings up and down as the signal is sent across the network.



Dr. Browne then asks one or more students to move their strings up and down to mimic cell communication. Students on the receiving end of the strings, then move their strings up and down as the signal is sent across the network.

## GPS Member Research Interests

Joe Mayo, Gordon College. Research and use of a constructivist pedagogy applied to college student learning and knowledge development.

Charles Talor, Valdosta State University. Research in emerging adulthood, including attachment processes of college aged adults, influences in the selection of a career and college major, and use of technology across the lifespan.

Jessica Dyal, The Haven. The study of attachment relationships in adulthood, especially in relation to significant life events.

Ashley Skinner, The Haven. The psychological impact of homelessness on women, especially of domestic violence.



## SNAPSHOT: INTERVIEW ON MEMBER PROGRAMS

### *Industrial Organizational Psychology at Valdosta State University*

#### **Overview**

Program Coordinators: Dr. Larry Wiley and Dr. Robert Bauer. Dr. Wiley received his doctorate from Auburn University, and Dr. Bauer from the University of Tennessee.

**Program Specifications:** Master of Science Degree (M.S.). This is a 45 hour program which can be completed in 2 years (5 semesters).

#### **Interview:**

What are the admission requirements? The minimum requirements for regular admission are undergraduate GPA no less than 3.0 and a GRE score of 1000 (Verbal plus Quantitative sections). In some cases students may be admitted on “probationary” status, if they fail to meet the full minimum requirements for “regular” admission. Approximately 6 to 8 students enter the program each year; which means we average 12 to 16 active students within the program. We currently have 17 in the program. The average GPA for these current students is 3.16 with an average GRE of 1030.

**What do graduates do after completing the program?** About 80% of students go into human resources jobs and 20% go into consulting or research.

**How is the job outlook?** It is very good for master’s I-O graduates. I have never conducted a formal survey of the students who have graduated, but virtually everyone gets a good job within a year of graduating. Aside from the fact that the market is good for I-O jobs, the high success rate of attaining a good job is partially due to the fact that many of our students do not restrict their job search to the Valdosta area. We have graduates working all over the state of Florida and in the Atlanta area. Many of our students come here from out-of-state and then return to their home state to find jobs.

**Highlights of the program:** The Society for Industrial Organizational Psychology (SIOP) published an article in July of 2004 reporting a national ranking survey of master’s-level I-O programs. There are about 100 programs in the US and 43 of them were included in the ranking analysis. Our program was ranked 19<sup>th</sup> Overall, 11<sup>th</sup> on Program Resources, 4<sup>th</sup> on Program Costs, and 3<sup>rd</sup> on Program Culture. These are really good national rankings for a program as small as ours. Participants in the survey were I-O graduate students from respective programs.

*Interview is continued on the next page*



## SNAPSHOT (continued from page 4)

Also, we have a student chapter of the Society for Human Resource Management (SHRM) which is the largest HR association in the country. The student chapter was started here by I-O graduate students. Members include our I-O students as well as graduate and undergraduate students in business, management, psychology, and public administration. We usually have one or two students who attend the national conference each year. Last year our student chapter received the Superior Merit Award.

Any students who are interested in learning more about the MS I-O Program at VSU can contact me via email at [lwiley@valdosta.edu](mailto:lwiley@valdosta.edu). They can also learn more about us by visiting our web page at <http://chiron.valdosta.edu/lwiley/ioprogram/index.htm>

## IN THE LABORATORY: MEMBER RESEARCH PROGRAMS

Dr. Kevin Colwell is director of the Forensic Psychology Group at Valdosta State University. He is currently working with over 13 students on topics in forensic psychology. Dr. Colwell is currently head of a national multi-site team studying interviewing and credibility assessment for the federal government. This system called "Assessment Criteria Indicative of Deception" or "ACID" was developed in conjunction with Cheryl Hiscock-Anisman at Daemen College in Amherst, New York. Dr. Colwell is conducting his research with Dr. C. A. Morgan of the Law and Psychiatry Program at Yale University.

Dr. Colwell is also working with Drs. Lori Colwell and David Wasieleski in the development of Test of Lingered Incompetence or "TOMI." This applies a two alternative forced choice stratagem to the assessment of malingering in competence to stand trial assessment.

Dr. Colwell is currently supervising undergraduate thesis projects for Ms. Debra Woods who developed a validation project on ACID test, and Ms. Alexis Rachel on assessment procedures for the TOMI test.

Current papers and publications from this group include:

Colwell, K., Hiscock-Anisman, C., Memon, A., Rachel, A., & Colwell, L. (2006) Vividness and spontaneity of statement detail characteristics as predictors of witness credibility. *American Journal of Forensic Psychology*

***In the laboratory continues on page 6***

## Society Member News\*

**Blaine Brown**, Ashlie Perry, and Greg Pinera presented “Computer and internet use among young and older adults,” at the Southeastern Psychological Association meeting, March 17, 2006, Atlanta.

**Steven Kohn**, **Amanda King**, Megan Dove-Steinkamp, and Angelique Riley presented “Using the internet for health information in later life,” at the Southeastern Psychological Association meeting, March 17, 2006, Atlanta.

**Jamie Boatright** and **Charles R. Talor** presented “How do younger and older adults use modern technology?,” at the Southeastern Psychological Association meeting, March 17, 2006, Atlanta.

Alexis Rachel, Marybeth Santoro, **David Wasieleski**, **Kevin Colwell**, and **Lori Colwell** presented “Test of malingered incompetence: A screen for feigned cognitive impairment,” at the Southeastern Psychological Association meeting, March 17, 2006. Atlanta.

**Deborah Briihl** presented “What the GRE Analytical-writing test is and how programs use it,” at the Southeastern Psychological Association meeting, March 17, 2006, Atlanta.

\* Member names are in **bold**

---

### *In the laboratory (continued from page 5) Dr. Kevin Colwell*

Colwell, K., Hiscock, C.K, Woods, D., Memon, A., & Michlik, M. (2006). How liars attempt to convince: Strategies of impression management and deception regarding a simulated theft. *American Journal of Forensic Psychology*

Colwell, K. & Sjerven, E. (January, 2005) The “Coin-in-Hand” stratagem for the forensic assessment of malingering. *American Journal of Forensic Psychology*.

## Author Guidelines for submitting articles to the Southeastern Journal of Psychology©:

The Southeastern Journal of Psychology© invites original manuscripts on topics in applied and basic psychology, and interdisciplinary work which intersects with psychology, such as education and learning, assessment and nursing, behavior within social groups. Articles representative of a variety of disciplinary bases are accepted. Content may address research, reviews, scholarly writings, field and clinical experiences, and the teaching of Psychology.

Brief manuscripts are 1,500 to 2,500 words (3 to 5 single spaced pages), manuscripts are 5,000 to 10,000 words (10 to 20 single spaced pages). Review of literature manuscripts will also be considered. All manuscripts must conform to the editorial style of the fifth edition of the APA style manual.

The Southeastern Journal of Psychology© is published in both electronic and hard-copy formats. For the electronic format, hypertext submissions are welcome.

- ◆ Articles may be submitted either electronically to the Editor or by ordinary mail on a floppy diskette, CD, or DVD disk in windows in MS Word or WordPerfect format. All articles will be peer reviewed in a blind process.
- ◆ Articles should be prepared according to the guidelines in the publication manual of the American Psychological Association (The Fifth Edition).
- ◆ Please include a 100-150 word abstract.
- ◆ Questions concerning possible contributions be directed to the Editor.

[crtalor@valdosta.edu](mailto:crtalor@valdosta.edu), or by

U.S. Postal Mail at  
Dr. Charles R. Talor  
Editor,  
Southeastern Journal of Psychology  
Department of Psychology and Counseling  
Valdosta State University  
Valdosta, Georgia

Submission deadline for the first edition issue is March 15, 2006



**2006 Georgia Psychological Society Conference  
Poster Session Titles  
Friday 3:30-4:30 pm in the Main Auditorium**

- Bales, Christen, Valdosta State University. The Effects of Behavior on Emergent Reading
- Boatright, J., University of Exeter, England, & Talor, C.R., Valdosta State University. Use of Technology Across the Lifespan.
- Walls, E., & Browne, B. Valdosta State University. The Effect of Word Length and Imageability on Memory
- Gonzalez, B.D, Ironson, G.H., Balbin, E.G., & Detz, K.J. University of Miami, Immune System Responses to Negative Life Events in HIV+ Subjects
- Talor, C. Valdosta State University. Impact of economic recession on college students' quality of life
- Stout, S. Valdosta State University, Analysis of Group by Trial Effects using a Randomization Comparison of Geometric Growth Rate Parameters
- Kohn, S., Dove-Steinkamp, M., & King, A. The Effect of Selective Social Comparison Processes on Depression and Anxiety in Later Life. Valdosta State University.
- Register, April. Valdosta State University. The Over-representation of Minorities in Special Education Programs.
- Popivker, L., & Malcolm, D.S. Fordham University, New York. Does Information or Secondary Reinforcement Maintain Behavior in College Students?
- Collier, R., & Malcolm, D.S. Fordham University, New York. Sowbug Whisperer: An Attempted Replication of a Psi Effect in Armadillium.
- Briihl, D., & Wasieleski, D. Valdosta State University. The GRE Analytical-Writing Test and How Programs Use It.
- Browne, B., & Lawson, A.L., Valdosta State University. Exposure Duration on Recognition Memory.

## 2006 Georgia Psychological Society Conference Guide to Presentations, Roundtables, and Symposia

### FRIDAY

4:30-5:20 pm Room 240  
How to get into graduate school: Teaching of Psychology Roundtable, Briehl, D., Lowney, K., & Colwell, K., Valdosta State University.

Discussion of requirements graduate school programs in the applied social sciences. Focus will be on programs in Psychology, Social Work, Marriage and Family Counseling, and related fields. Discussion will include entry requirements of master-level and doctoral programs.

5:20-6:45 pm Room 240  
Overview of Graduate Fields in the Social Sciences. Briehl, D., Lowney, K., Hinkle, K., Wiley, L., & Colwell, K. Valdosta State University.

Discussion of the different areas of specialty for graduate study in Psychology, Social Work, Marriage and Family Counseling, and related fields. Focus on degrees required for employment areas and job tasks.

5:20-6:30 pm Room 243  
Reflective Pedagogy through Analogy Construction. Mayo, J. Gordon College.

Since thinking and speech are inherently metaphorical processes, educators use analogies as explanatory tools in introducing new concepts. Relying heavily on my own classroom research and practice, I will highlight supporting rationale and general guidelines for teaching with analogies, along with analogy-based classroom activities arranged in ascending levels of complexity.

### Saturday

8:30-8:50 am  
Opening and coffee/Doughnuts Main Lobby

9:00-9:50 am Room 243  
Teaching of Psychology Interest Group meeting with Joe Mayo, D. Briehl, presiding.

**Continued next page**

9:00-11:50 am Auditorium  
Introduction to Red Cross Services, White, P. American Red Cross

This is the Red Cross introduction to disaster services. Training for child care workers, head start personnel, and others who wish to receive the basic introduction training for assisting in disaster events.

10:00—12:00 pm Room 240  
Mock GRE Experience. D. Briehl, Valdosta State University.

The mock GRE experience provides students a realistic exam experience before taking the actual assessment. Students will take a shortened version of the verbal, quantitative and written sections. Students will receive feedback on their mock performance in the 1:00 pm afternoon session (below).

12:00-1:00 pm LUNCH BBQ in main Lobby

12:00-12:45 pm Room 222

Lunch meeting of the Early Intervention Interest group. L. Hilgert, Valdosta State University, presiding.

Meet and discuss early intervention issues for south Georgia. Topics include research and applied needs, grant opportunities, and fellowship.

1:00—1:50 pm Room 240  
Mock GRE Feedback. D. Briehl, Valdosta State University.

Students will receive feedback on their performance on the verbal, quantitative, and written sections. This session completes the testing session begun at 10:00 am (above).

1:00—1:50 pm Room 243  
Workshop: Assessment of malingering in clinical and counseling psychology. K. Colwell, Valdosta State University.

Clinicians are often faced with distortion or fabrication of symptoms. This session provides an overview of assessment techniques designed to detect these issues of response style. These will include: the forced-choice paradigm, symptom validity testing, and other interviewing and assessment strategies. Areas of assessment will include: feigned cognitive impairment (amnesia and low IQ), forensic assessment (competence, criminal responsibility), memory for events, and psychosis. Methods of assessment will be presented which can be used by nurses, social workers, law enforcement, and counselors.

2:00—2:50 pm

Room 240

Symposium on Clinical and Forensic Psychology, K. Colwell, Valdosta State University, presiding

Police Officers' Cognitive Appraisals for Traumatic Events: Implications for Treatment and Training, Colwell, L. H., Midtown Psychological Associates.

Assessment of a short test of malingering. Colwell, K. Valdosta State University.

2:00—3:15 pm

Room 243

Symposium and Practice Roundtable, Holliman, D., and Kohn, S.J., Valdosta State University, presiding.

Defensive Coping in Later Life as a Function of Lateral Social Comparisons: Research and Clinical Implications. Kohn, S. J., Valdosta State University.

Evaluating an Interactive Activity Enhancement Group (IAEG) in an Alzheimer's Day Care. Holliman, D. Valdosta State University.

Stress and Coping in Nursing Home Personnel. Avery, C., Williams, J., Phillips, M., Smith, S., Maxwell, J., & DePaola, S. Thomas University.

Practice Roundtable Session: discussion of aging in South Georgia: community needs, aging in place, retirement migration, and statewide aging trends by symposium presenters.

3:00—3:50 pm

Room 222

Symposium: Psychology of Religion, Motivation, and Creativity. West, M. presiding

Religious Beliefs as Predictors of Attitudes Toward Cloning. Nielsen, M. Georgia Southern University, GA; Bainbridge, W.S., National Science Foundation; Hellstrom, I., Georgia Southern University, GA.

The Effects of Cheating Behaviors of College Students on Faculty. Walls, E., & Talor, C.R. Valdosta State University.

Reffel, J. Valdosta State University. The relationship between perfectionism and "beyond" creativity

3:25—3:50 pm

Room 243

Psychology and Aging Interest Group meeting. Holliman, D., & Kohn, K., presiding.

Discussions on (1) the development of a Center on Aging, (2) a curriculum on aging for University certificates, and (3) a sign-up for a listserv on aging.

4:00—5:00 pm

Auditorium

- ◆ Closing Session
- ◆ Proposal on name change.
- ◆ Discussion on new interest groups
  - (1) Clinical and Counseling Psychology
  - (2) Experimental Psychology
  - (3) Ethnicity and Race
  - (4) Psychology of Social Work
- ◆ Set-up committee for next year's meeting.

## **Schedule of meetings and conferences 2006-2007**

Georgia Psychological Society, Valdosta, Georgia April 7-8, 2006.

Association for Psychological Science, New York City, New York, May 18-21, 2006.

The Society for Prevention Research: "Applying Prevention Science to Reduce Health Disparities." San Antonio, Texas, May 31 — June 2nd , 2006.

American Psychological Association, New Orleans, August 10-13, 2006

Gerontological Society of America, Dallas, Texas, November 11-14, 2006.

Society for Research in Child Development, Boston, MA., March 29-April 1, 2007

## Join the Georgia Psychological Society!©

Become a member of the only professional group of Psychologists for southern Georgia. The GPS was founded on the great need for professional communication and sharing for college faculty, professionals, and students of our region.

Regular and professional members receive our quarterly newsletter, electronic and hardcopy subscriptions to the *Southeastern Journal of Psychology\**, and 50% discount to the annual conference.

Yes, I would like to become a member:

Tell us about yourself:

Name: \_\_\_\_\_ Title: \_\_\_\_\_

Mailing Address: \_\_\_\_\_

\_\_\_\_\_  
\_\_\_\_\_

Rates:

- Regular member (Ph.D., Psy.D., Ed.D.) \$25.00
- Professional member (M.A., M.S., Ed.S.) \$15.00
- Students\* (graduate or undergraduate) \$ 5.00

\*Student members who wish to receive hardcopies of the *Southeastern Journal of Psychology*© please add \$5.00 (total yearly cost: \$10.00).

I would like to join the following Special Interest Groups  
(free to members, no limit on SIG memberships)

- Aging and Psychology       Teaching of psychology
- Early Intervention

<b>At a glance schedule of the first annual meeting of the Georgia Psychological Society, Valdosta, GA. April 7<sup>th</sup> &amp; 8<sup>th</sup></b>		
<b>Friday, April 7, 2006 Pedagogy, Education and Psychology</b> Location: Continuing Ed Building, Valdosta State University		
3:00 pm	<b>Arrival and opening in Auditorium; Registration in lobby</b>	
3:30 – 4:30 pm	<b>Poster session in the main Auditorium</b>	
4:30—5:20 pm	<b>How to Get into Graduate School. Teaching of Psychology Roundtable:</b> Dr. Deborah Briihl, Valdosta State University, presiding. <b>Room 240</b>	
5:30–6:30 pm	<b>Overview of graduate fields in social sciences.</b> Discussion: Dr. Deborah Briihl, Valdosta State University, presiding, <b>Room 240</b> (to 6:45 pm)	<b>Presentation:</b> Dr. Joseph Mayo, Gordon College. Reflective Pedagogy through Analogy Construction. <b>Room 243</b>
<b>Saturday, April 8, 2006 Psychology and the Social Sciences</b> Location: Continuing Ed Building, Valdosta State University		
8:30—8:50 am	<b>Opening and Coffee and Doughnuts in main Hall</b>	
9:00—9:50 am	<b>Meeting of the Teaching of Psychology Interest group</b> featuring Dr. Joe Mayo. <b>Room 243</b>	<b>Introduction to Disaster services.</b> <b>Auditorium</b>
10:00-11:00 am	<b>Begin MOCK GRE experience.</b> <b>Room 240</b>	CONTINUE Disaster services <b>Auditorium</b>
11:00-11:50 am	CONTINUE Mock GRE. <b>Room 240</b>	CONTINUE Disaster services <b>Auditorium</b>
12:00—1:00 pm	<b>LUNCH-on own</b> <i>Psychology Club BBQ (\$5.00 a plate) available main lobby area.</i> <b>Early Intervention Lunch meeting:</b> host Dr. Larry Hilgert, 12:00—12:45 pm. <b>Room 222</b>	
1:00-1:50 pm	<b>Begin Mock GRE Feedback.</b> <b>Room 240</b>	<b>Workshop: Assessment of malingering in clinical and counseling psychology.</b> <b>Room 243</b>
2:00—2:50 pm	<b>Symposium on Clinical and Forensic Psychology</b> <b>Room 240</b>	<b>Symposium and practice roundtable (to 3:15 pm): Psychology and Aging research paper session and Discussion</b> <b>Room 243</b>
3:00 -3:50 pm	<b>Symposium: Psychology of Religion, Motivation, and Creativity.</b> <b>Room 222.</b>	<b>Psychology and Aging Interest Group meeting</b> (begins 3:25): <b>Room 243</b>
4:00 pm	<b>Closing Session in Auditorium</b> ♦ New interest group discussion: (1) Clinical and Counseling Psychology, (2) Experimental Psychology	(3) Ethnicity and Race, (4) Psychology of Social Work ♦ Proposal on name change ♦ Set-up committee for next year's meeting.